

softpod



global

A place to focus and engage



Softpod™ responds to the changing landscape of today's workplace, providing an alternative to conventional workstations and cubicles. As an adjunct to collaborative and community spaces, Softpod supports activities that require individual focus and engagement.

Softpod facilitates hybrid schedules that require unassigned workspaces as people move between the office and home. On its own or as a cluster of pods, Softpod supports flexibility within an open plan office.

3-sided pod



3-sided pod - 72"W x 30"D x 54"H

Standard worksurface

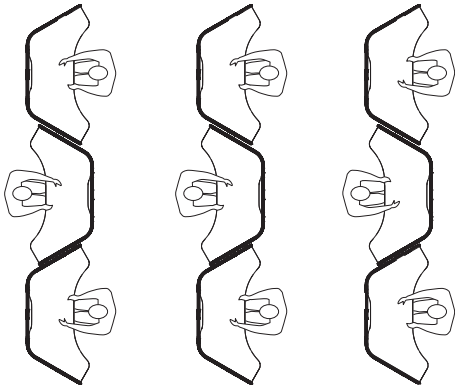


Softpod shown in PET felt, Shamrock and Mist, with worksurface in Noce Medio and storage in Designer White. Noetic seating shown.

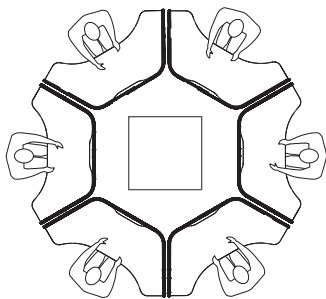
Flexible planning

Planning options

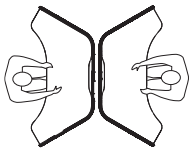
Touchdown



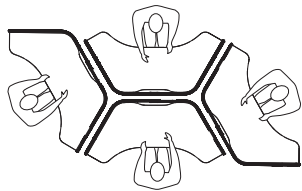
Around column



Cluster of 2 Softpods



Cluster of 4 Softpods



Individual pods are available as three, four and five-sided models, providing different levels of privacy. The 120-degree footprint supports clusters of one or more pods in a layout. Wiring solutions for individual and multiple pods deliver power and data above and below the worksurface.

4-sided pod



4-sided pod - 72"W x 65"D x 54"H

Standard worksurface (left and right)



Wraparound worksurface (left and right)



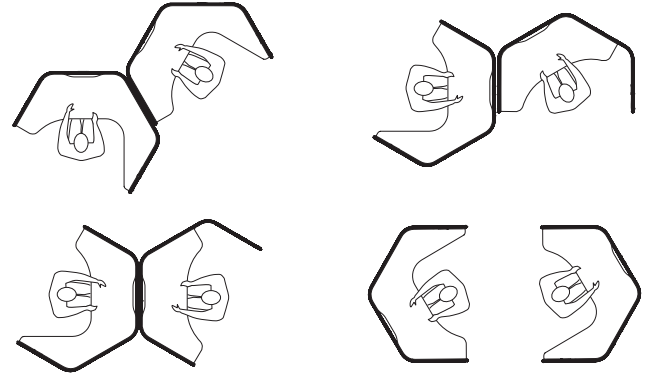
Softpod shown in PET felt, Shamrock and Mist, with worksurface in Noce Medio and storage in Designer White. Noetic seating shown.

Settle in

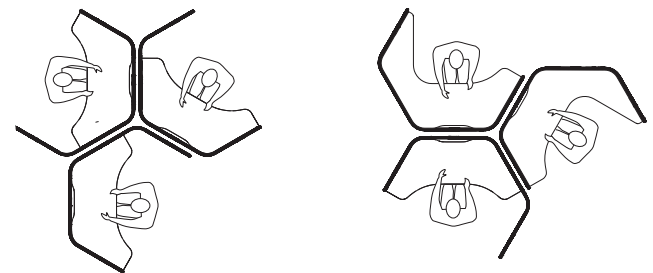


Planning options

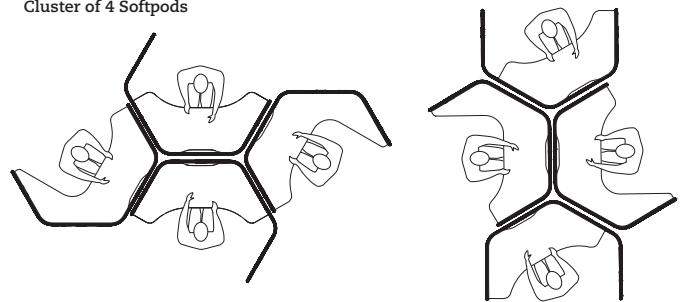
Cluster of 2 Softpods



Cluster of 3 Softpods



Cluster of 4 Softpods



Softpod includes casual storage and accessory options to meet the individual's daily needs. Bag and coat hooks, undersurface storage, whiteboards and shelves keep personal items in sight and within reach. PET felt extension panels provide additional privacy. Four and five-sided pods support a wraparound worksurface option.

5-sided pod

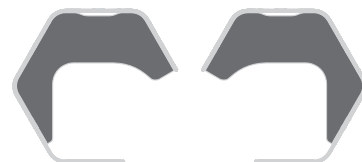


5-sided pod - 72"W x 65"D x 54"H

Standard worksurface (left, right and center)



Wraparound worksurface (left and right)

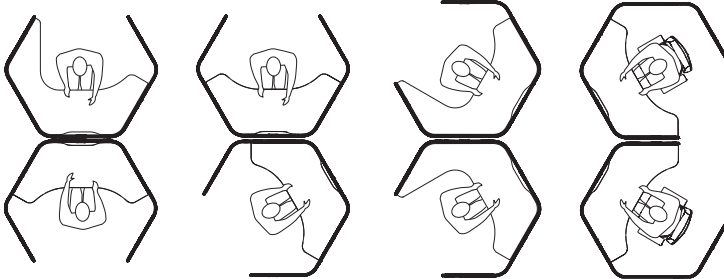


Softpod shown in PET felt, Shamrock and Mist, with worksurface and storage in Designer White. Noetic seating shown.

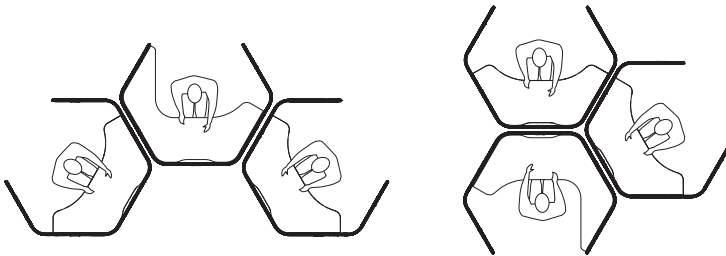
Sustainably minded

Planning options

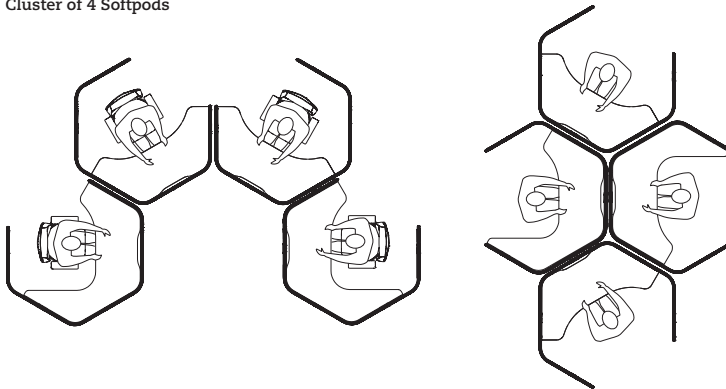
Cluster of 2 Softpods



Cluster of 3 Softpods



Cluster of 4 Softpods



Softpod panels are constructed of two layers of 50% recycled PET felt bonded to a slim internal aluminum framework; both are 100% recyclable. PET felt has inherent acoustical properties to benefit not only the individual within the pod but also others in the surrounding environment.

Additional information can be found on the Global [website](#).

It's in the details

Wiring and power



Slim desktop power module: 2 power receptacles, USB-A and USB-C



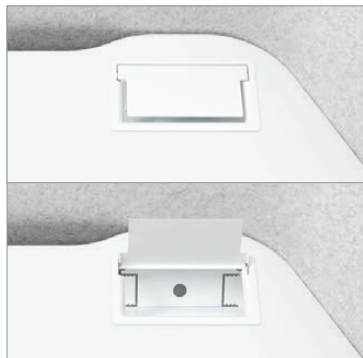
Slim desktop power module: 3 power receptacles, USB-A and USB-C



Under worksurface USB charger: USB-A and USB-C



Pod-to-pod connecting grommet



Access door module with cable tray



Access door module with cable tray and power bar

Features



Brackets for shelves (shown) and worksurfaces attach securely to the internal aluminum frame



Rear wall shelf



Legs are available in Charcoal (shown) and Designer White

Privacy extensions



Top corner PET felt extension divider in solid or a perforated pattern (shown)



Corner PET felt extension divider in solid (shown) or a perforated pattern



End PET felt extension divider in solid

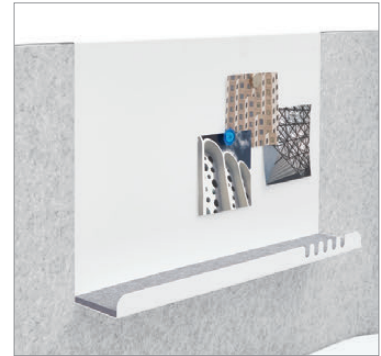


Add-on single J-divider with connecting hardware

Options



Two-sided white dry erase nameplate



Hanging shelf



Pull out pantry storage serves as a multifunction storage unit



Hanging shelf with dry erase board



Open storage with shelf and coat/bag hook



Pod-mounted coat/bag hook

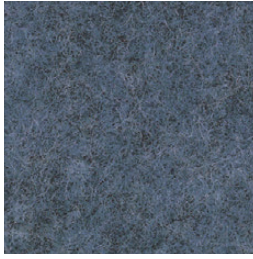


Coat/bag hook for storage unit

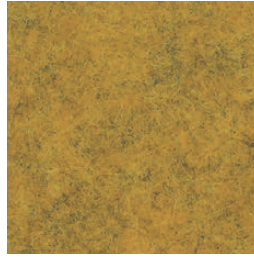


Coat/bag hook mounted under worksurface

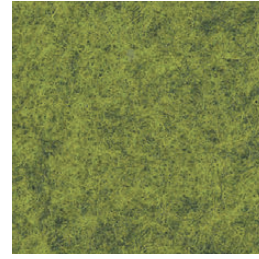
PET felt



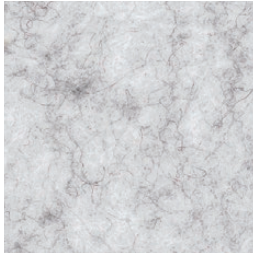
Denim



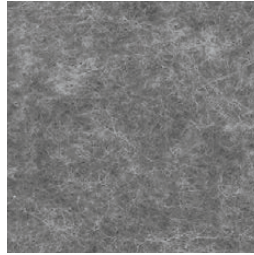
Harvest



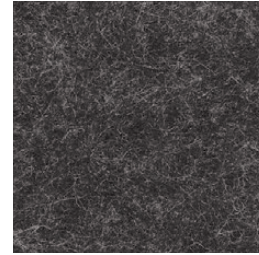
Shamrock



Mist



Pewter



Graphite



Brick



White



Black

Softpod is available in a palette of nine PET felt colors. The inside and outside felt surfaces of the pod can be specified in the same color or in different colors. Worksurfaces are available in thermally fused laminate or high pressure laminate in a wide range of popular finishes.



More about Softpod

Explore the Application Guide for:

- power and data capabilities
- pod-to-pod power connections
- space planning applications
- additional storage and accessories

Please visit globalfurnituregroup.com for additional product information including industry and environmental certifications.

Cover: Softpod shown in PET felt, Shamrock and Mist, with worksurfaces and storage in Designer White. Noetic seating shown.



U.S.A.
Global Furniture Group
17 West Stow Road P.O. Box 562
Marlton New Jersey U.S.A. 08053
Tel (856) 596-2390 (800) 220-1900

Canada
Global Furniture Group
1350 Flint Rd., Toronto Ontario Canada M3J 2J7
Sales & Marketing: Tel (1-877) 446-2251

International
Global Furniture Group
560 Supertest Road, Toronto
Ontario Canada M3J 2M6
Tel (416) 661-3660 (800) 668-5870

Offices throughout Canada, United States, United Kingdom and Brazil. Distribution around the world. A member of Global Furniture Group. © 2023 ©™ Trademarks of Global Furniture Group. These products may be covered by one or more issued patents or pending patent applications in Canada, the U.S. and elsewhere. All intellectual property rights in applicable trademarks, patents and industrial designs are strictly reserved. Made in Canada. Specifications are correct at time of printing. Printed in Canada. Creative / Global Design Center 081223 23.0068